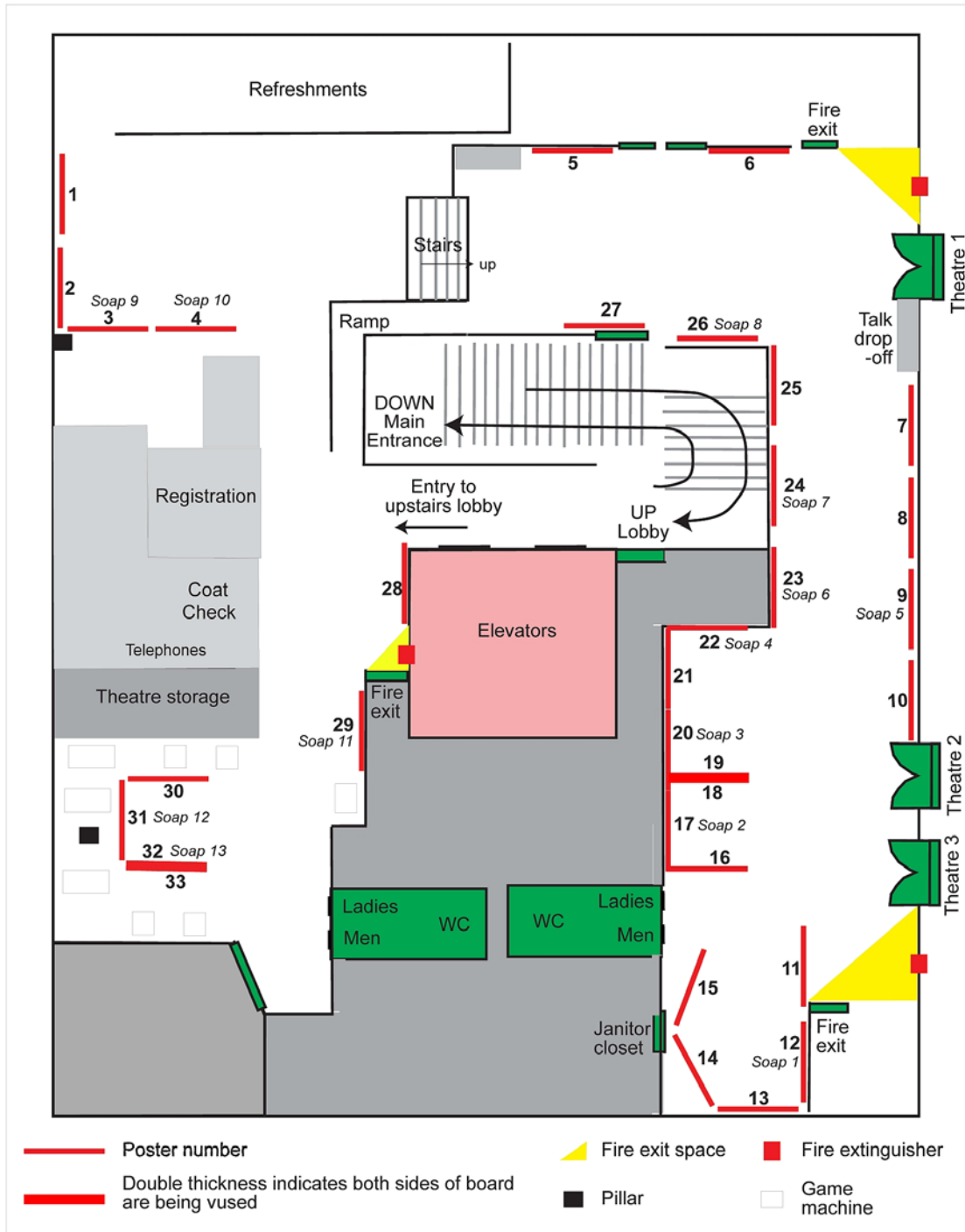


Capitol Theatre Lobby - Poster Session (14:50 to 16:30)
 Chairpersons: Beth Fischer, Val Jackson

Capitol Theatre Lobby Floorplan
 Poster and Soapbox Talk Locations



Poster Locations (Alphabetically by First Author)

Location	First Author Surname	Title	Category
19	Acosta Gongora	Preliminary Observations of the IOCG Mineralization at the DAMP, FAB, And Nori Showings, Great Bear Magmatic Zone	Wopmay/IOCG
16	Baldwin	Community Mapping Program: Fort McPherson, NWT	Outreach
33	Beales	Got Kimberlite – NTGO is the Custodian of a Major Kimberlite Collection	Diamonds
26	Bédard*	Geochemical and Mineral-Chemical Systematics from a Picritic Franklin Sill on Victoria Island, N.W.T.: Insights on Internal Fractionation Processes	Geoscience - Islands
27	Bédard	The Booth River Intrusive Complex, Nunavut: Preliminary Results	Geoscience - Slave
11	Cheng	Chemicals Management from Cradle to Grave	Environmental Mgmt
32	Cross*	The Diamond Potential of the Tuwawi Kimberlite (Baffin Island, Nunavut)	Diamonds
24	Fernandes*	Searching for SEDEX-Style Mineralization in the Northwest Territories: Barite as a Possible Vector	Min Dep - Cordillera
29	Hamre*	NWT Protected Areas Strategy: Research Used for Protected Areas Decision Making	Land Withdrawals
25	Hicken	Indicator Mineral and Surficial Geochemical Study of the Izok Lake Zn-Cu-Pb-Ag Volcanogenic Massive Sulphide Deposit, Nunavut	Surficial / Min Dep - Slave
21	Jackson	South Wopmay Bedrock Mapping Project: Highlights from 2009	Wopmay/IOCG
31	Johnson*	The Micro-/ Macro-Diamond Relationship: A Preliminary Case Study on Diamonds from Artemisia Kimberlite (Northern Slave Craton, Canada)	Diamonds
14	Jones	Regional Geoscience Studies and Petroleum Potential, Peel Plateau and Plain, Northwest Territories and Yukon: Final Deliverables	Energy
15	Kerr	Tri-Territorial Surficial Geology Map Integration	Surficial
6	Kerswill	Activities under the Mineral Resource Assessment Component, GEM Minerals Program	Remote Mapping
20	Lee*	Geophysical Interpretation of the South Wopmay, Northwest Territories, Canada	Wopmay/IOCG
1	MacLeod	Manganese and Phosphorous Enrichment In Baffinland Iron Mines Corp. Deposit No. 1, Mary River Iron Formation, Northern Baffin Island, Nunavut	Min Dep - Baffin
12	Macumber*	High Resolution Paleoclimatic Study of Lacustrine Sediments along Tibbitt Contwoyto Ice Road, Yellowknife, NWT, Canada	Climate Change



Location	First Author Surname	Title	Category
30	Marcheggiani-Croden	Diavik Boart - Unrelated to Gem Diamond and Fibrous Coats?	Diamonds
23	Milton*	The Redstone Copperbelt, Northwest Territories, Canada	Min Dep - Cordillera
18	Montreuil	IOCG Environments in the Great Bear Magmatic Zone	Wopmay/IOCG
8	Mumford	The Petrology of the Blachford Lake Intrusive Suite: Putting HFSE And Cu-PGE Mineralization into Context	Min Dep - Slave
5	Mvondo	Study of a Structural and Stratigraphic Link between Elu and Hope Bay Greenstone Belts, NE Slave Craton	Geoscience - Slave
7	Ootes	Is Our Bedrock 'Green'stone? Dimension and Building Stone Opportunities in the North Slave	Min Dep - Slave
4	Peter*	Hyperspectral Surveying in Support of Mineral Exploration in Canada's North; Rationale, Methodology, and an Example from the Hackett River Greenstone Belt, Nunavut	Rem Sens - Slave
10	Ripple	Fluid and Thermal History of a Breccia Zone of the West Bay Fault, Northwest Territories	Min Dep - Slave
2	Sanborn-Barrie	A New Bedrock Geology Map of the Cumberland Peninsula, Nunavut: An Initial Step in Evaluating the Mineral Potential of Eastern Baffin Island	Geoscience - Baffin
22	Smar*	Initial Investigations into the P-T-T-D History of Paleoproterozoic Supracrustal Rocks at Grant and Brownwater Lakes, Southern Wopmay Orogen	Wopmay/IOCG
9	Smith*	Characterization of Gold and Base-Metal Mineralization Styles in the North End of the Yellowknife Greenstone Belt	Min Dep - Slave
17	Tappert*	The Future of Core Logging: The Reflectance Spectroscopy of Hematite and Micas from the IOCG Deposit at Olympic Dam, South Australia	Wopmay/IOCG
3	Tschirhart*	Preliminary 3D geophysical modeling of the Aberdeen Sub-Basin, Thelon Province, Nunavut	Geophys - Thelon
13	Whalen	The Changing River Morphology of the Mackenzie Delta	Infrastructure / Geomorph
28	Wright	Mineral and Energy Resource Assessment (MERA) for the Area of Interest for the Proposed East Arm National Park – An Update	Min En Resouce Assessment

* soapbox talk will be given; see schedule below



Posters (by Location)

Location	First Author Surname	Title	Category
1	MacLeod	<i>Manganese and Phosphorous Enrichment In Baffinland Iron Mines Corp. Deposit No. 1, Mary River Iron Formation, Northern Baffin Island, Nunavut</i>	<i>Min Dep - Baffin</i>
2	Sanborn-Barrie	<i>A New Bedrock Geology Map of the Cumberland Peninsula, Nunavut: An Initial Step in Evaluating the Mineral Potential of Eastern Baffin Island</i>	<i>Geoscience - Baffin</i>
3	Tschirhart*	<i>Preliminary 3D geophysical modeling of the Aberdeen Sub-Basin, Thelon Province, Nunavut</i>	<i>Geophys - Thelon</i>
4	Peter*	<i>Hyperspectral Surveying in Support of Mineral Exploration in Canada's North; Rationale, Methodology, and an Example from the Hackett River Greenstone Belt, Nunavut</i>	<i>Rem Sens - Slave</i>
5	Mvondo	<i>Study of a Structural and Stratigraphic Link between Elu and Hope Bay Greenstone Belts, NE Slave Craton</i>	<i>Geoscience - Slave</i>
6	Kerswill	<i>Activities under the Mineral Resource Assessment Component, GEM Minerals Program</i>	<i>Remote Mapping</i>
7	Ootes	<i>Is Our Bedrock 'Green'stone? Dimension and Building Stone Opportunities in the North Slave</i>	<i>Min Dep - Slave</i>
8	Mumford	<i>The Petrology of the Blachford Lake Intrusive Suite: Putting HFSE And Cu-PGE Mineralization into Context</i>	<i>Min Dep - Slave</i>
9	Smith*	<i>Characterization of Gold and Base-Metal Mineralization Styles in the North End of the Yellowknife Greenstone Belt</i>	<i>Min Dep - Slave</i>
10	Ripple	<i>Fluid and Thermal History of a Breccia Zone of the West Bay Fault, Northwest Territories</i>	<i>Min Dep - Slave</i>
11	Cheng	<i>Chemicals Management from Cradle to Grave</i>	<i>Environmental Mgmt</i>
12	Macumber*	<i>High Resolution Paleoclimatic Study of Lacustrine Sediments along Tibbitt Contwoyto Ice Road, Yellowknife, NWT, Canada</i>	<i>Climate Change</i>
13	Whalen	<i>The Changing River Morphology of the Mackenzie Delta</i>	<i>Infrastructure / Geomorph</i>
14	Jones	<i>Regional Geoscience Studies and Petroleum Potential, Peel Plateau and Plain, Northwest Territories and Yukon: Final Deliverables</i>	<i>Energy</i>
15	Kerr	<i>Tri-Territorial Surficial Geology Map Integration</i>	<i>Surficial</i>
16	Baldwin	<i>Community Mapping Program: Fort McPherson, NWT</i>	<i>Outreach</i>



Location	First Author Surname	Title	Category
17	Tappert*	<i>The Future of Core Logging: The Reflectance Spectroscopy of Hematite and Micas from the IOCG Deposit at Olympic Dam, South Australia</i>	Wopmay/IOCG
18	Montreuil	<i>IOCG Environments in the Great Bear Magmatic Zone</i>	Wopmay/IOCG
19	Acosta Gongora	<i>Preliminary Observations of the IOCG Mineralization at the DAMP, FAB, And Nori Showings, Great Bear Magmatic Zone</i>	Wopmay/IOCG
20	Lee*	<i>Geophysical Interpretation of the South Wopmay, Northwest Territories, Canada</i>	Wopmay/IOCG
21	Jackson	<i>South Wopmay Bedrock Mapping Project: Highlights from 2009</i>	Wopmay/IOCG
22	Smar*	<i>Initial Investigations into the P-T-T-D History of Paleoproterozoic Supracrustal Rocks at Grant and Brownwater Lakes, Southern Wopmay Orogen</i>	Wopmay/IOCG
23	Milton*	<i>The Redstone Copperbelt, Northwest Territories, Canada</i>	Min Dep - Cordillera
24	Fernandes*	<i>Searching for SEDEX-Style Mineralization in the Northwest Territories: Barite as a Possible Vector</i>	Min Dep - Cordillera
25	Hicken	<i>Indicator Mineral and Surficial Geochemical Study of the Izok Lake Zn-Cu-Pb-Ag Volcanogenic Massive Sulphide Deposit, Nunavut</i>	Min Dep / Surficial - Slave
26	Bédard*	<i>Geochemical and Mineral-Chemical Systematics from a Picritic Franklin Sill on Victoria Island, N.W.T.: Insights on Internal Fractionation Processes</i>	Geoscience - Islands
27	Bédard	<i>The Booth River Intrusive Complex, Nunavut: Preliminary Results</i>	Geoscience - Slave
28	Wright	<i>Mineral and Energy Resource Assessment (MERA) for the Area of Interest for the Proposed East Arm National Park – An Update</i>	Min En Resource Assessment
29	Hamre*	<i>NWT Protected Areas Strategy: Research Used for Protected Areas Decision Making</i>	Land Withdrawals
30	Marcheggiani-Croden	<i>Diavik Boart - Unrelated to Gem Diamond and Fibrous Coats?</i>	Diamonds
31	Johnson*	<i>The Micro-/ Macro-Diamond Relationship: A Preliminary Case Study on Diamonds from Artemisia Kimberlite (Northern Slave Craton, Canada)</i>	Diamonds
32	Cross*	<i>The Diamond Potential of the Tuwawi Kimberlite (Baffin Island, Nunavut)</i>	Diamonds
33	Beales	<i>Got Kimberlite – NTGO is the Custodian of a Major Kimberlite Collection</i>	Diamonds

*** soapbox talk will be given; see schedule below**



Soapbox Talks Schedule (14:58 to ~16:30)

Chairpersons: Beth Fischer & Val Jackson

Location	First Author Surname	Soap-box talk	Approx time	Title	Category
12	Macumber*	1	14:58	High Resolution Paleoclimatic Study of Lacustrine Sediments along Tibbitt Contwoyto Ice Road, Yellowknife, NWT, Canada	Climate Change
17	Tappert	2	15:05	The Future of Core Logging: The Reflectance Spectroscopy of Hematite and Micas from the IOCG Deposit at Olympic Dam, South Australia	Wopmay/IOCG
20	Lee*	3	15:12	Geophysical Interpretation of the South Wopmay, Northwest Territories, Canada	Wopmay/IOCG
22	Smar*	4	15:19	Initial Investigations into the P-T-T-D History of Paleoproterozoic Supracrustal Rocks at Grant and Brownwater Lakes, Southern Wopmay Orogen	Wopmay/IOCG
9	Smith*	5	15:26	Characterization of Gold and Base-Metal Mineralization Styles in the North End of the Yellowknife Greenstone Belt	Min Dep - Slave
23	Milton*	6	15:33	The Redstone Copperbelt, Northwest Territories, Canada	Min Dep - Cordillera
24	Fernandes*	7	15:40	Searching for SEDEX-Style Mineralization in the Northwest Territories: Barite as a Possible Vector	Min Dep - Cordillera
26	Bédard	8	15:47	Geochemical and Mineral-Chemical Systematics from a Picritic Franklin Sill on Victoria Island, N.W.T.: Insights on Internal Fractionation Processes	Geoscience - Islands
3	Tschirhart*	9	15:54	Preliminary 3D geophysical modeling of the Aberdeen Sub-Basin, Thelon Province, Nunavut	Geophys - Thelon
4	Peter	10	16:01	Hyperspectral Surveying in Support of Mineral Exploration in Canada's North; Rationale, Methodology, and an Example from the Hackett River Greenstone Belt, Nunavut	Rem Sens - Slave
29	Hamre	11	16:08	NWT Protected Areas Strategy: Research Used for Protected Areas Decision Making	Land Withdrawals
31	Johnson*	12	16:15	The Micro-/ Macro-Diamond Relationship: A Preliminary Case Study on Diamonds from Artemisia Kimberlite (Northern Slave Craton, Canada)	Diamonds
32	Cross	13	16:22	The Diamond Potential of the Tuwawi Kimberlite (Baffin Island, Nunavut)	Diamonds

* student presenter

