

Tuesday, November 17 (morning)

Theatre 1 – Exploration & Geoscience

Chairs: Edith Martel, Pattie Beales

- 08:40 Ketchum, J.W.F. and Cairns, S.R.** - Northwest Territories Geoscience Office: Overview of Current Activities
- 09:00 Ham, L.J. and Costello, K.D.** - Nunavut: Growing into the Next Decade
- 09:20 Adcock, S.W., Spirito, W.A., Chorlton, L. B., Paulen, R.C., McClenaghan, M.B., and Kerr, D.E.*** - The Nunavut Indicator Mineral Compilation and the Canadian Database of Geochemical Surveys: A Strategy for Harmonized Management and Dissemination over the Internet
- 09:40 Webb, D.R., Pratico, V.V., and Regular, M.** - Update on Tyhee Development Corp's Yellowknife Gold Project, NWT
- 10:00 Coffee** (sponsored by Sub-Arctic Surveys Ltd.)
- 10:20 Kivi, K.R., Doyle, B.J., and Senn, M.J.** - 2009 Exploration Update for the Providence Nickel Discovery, Slave Province, NT.
- 10:40 Manojlovic, P.M.** - New Discoveries at the Wishbone Silver - Zinc and Back River Gold Projects
- 11:00 Lane, G.** - The Role of Mineralogy in Exploration
- 11:20 Schleiss, W.A. and Burns, R.F.** - Developing the World-Class Pine Point Property
- 11:40 Coffee** (sponsored by NWT & Nunavut Chamber of Mines)
- 12:00 Mawdsley, B.** - Working Effectively with the Mineral Analysis Laboratory
- 12:20 Kjarsgaard, B.A. and Wright, D. F.** - Mineral and Energy Resource Assessment (MERA) for the Area of Interest for the Proposed East Arm National Park
- 12:40 Welcome**
- 13:00 Lunch** (sponsored by Boart Longyear Drilling Services, Nuna Group of Companies, and NWT & Nunavut Chamber of Mines) – Weledeh and St. Patrick's School gymnasium



Tuesday, November 17 (morning)

Theatre 2 – Regulatory Issues

Chairs: Andy Graw, Angie Norris

- 08:40 Hamre, K.** - NWT Protected Areas Strategy: Status of Land Access and Protected Areas Decision Making
- 09:00 Wright-Bird, J. and Wiebe, H.** - The Sahtu Land Use Plan: Challenges & Solutions
- 09:20 Beveridge, M. and Mills, C.** - Draft NWT Water Stewardship Strategy
- 09:40 Holder, J., Seale, L., MacDonald, B.A., Fleck, S., Lakusta, T.*, Machtans, C., and Smith, R.** - Seismic Exploration Guidance for the Protection of Land, Forest, and Wildlife in the Northwest Territories
- 10:00 Coffee** (sponsored by Sub-Arctic Surveys Ltd.)
- 10:20 Slack, T.** - Exploration Agreements in the Akaitcho Region – The Yellowknives Dene Perspective
- 10:40 Kanigan, J.C.N.** - Updating the Northern Land Use Guidelines for the Northwest Territories and Nunavut
- 11:00 Racher, K.** - Clarity, Certainty and Consistency in Land and Water Board Processes: A Work in Progress
- 11:20 Traynor, S.** - Northern Regulatory Improvement Initiative: Update on Progress
- 11:40 Coffee** (sponsored by NWT & Nunavut Chamber of Mines)
- 12:00 Hoogeveen, D.** - Exploring the Debate over “Free-Entry” Mineral Staking (*student presentation*)
- 12:20 Hardin, M.J.** - The Duty to Consult and Accommodate: Current Judicial and Statutory Developments
- 12:40 Welcome** (Theatre 1)
- 13:00 Lunch** (sponsored by Boart Longyear Drilling Services, Nuna Group of Companies, and NWT & Nunavut Chamber of Mines) – Weledeh and St. Patrick’s School gymnasium



Tuesday, November 17 (afternoon)

Theatre 1 – Exploration & Geoscience

Chairs: John Ketchum, Don James

12:30-19:00 Trade Show – Weledeh and St. Patrick's School gymnasium – Parking is available at 4503 52 Ave. (look for the Geoscience Forum signs)

14:50 Falck, H. and Day, S. - New Stream Sediment Survey Results from the Arctic Red and Mountain Rivers, Mackenzie Mountains, NTS 106 A and B

15:10 Martel E., Fischer B., and Falck, H. - Selwyn-Mackenzie Shale Basins Project: Is another Red Dog Hiding in the Misty Creek Embayment?

15:30 Dunning, J.K. - Selwyn Project: Poised for Developing High-Grade Zinc & Lead

15:50 Kirkham, G., Baker, F., and Falck, H. - The Cantung Mine: Using 3D Modeling for Exploration Targeting and Resource/Reserve Calculations

16:10 Burns, R.F. - Sedimentary Copper, Lead and Zinc in the NWT

16:30-19:00 Reception (sponsored by Diavik Diamond Mine (a Rio Tinto/Harry Winston joint venture), First Air – The Airline of the North, Trinity Helicopters Ltd., and NWT & Nunavut Chamber of Mines) – Weledeh and St. Patrick's School gymnasium – please don't drink and drive. Complimentary rides home are provided by St. Patrick's SADD. Pick-up is in the Weledeh parking lot.

19:00 Charles Camsell Talk: Dr. Jean-Bernard Caron (sponsored by NAPEG, and Yellowknife 2007) – Prince of Wales Heritage Centre

19:00 EBA Reception in support of NWT Mining Heritage Society – Top Knight (4910 49 St)



Tuesday, November 17 (afternoon)

Theatre 2 – Mining Practices & Northern Infrastructure

Chairs: Val Gordon, Fraser Fairman

12:30-19:00 Trade Show – Weledeh and St. Patrick’s School gymnasium – Parking is available at 4503 52 Ave. (look for the Geoscience Forum signs)

14:50 Reichard, P. - Collapsible Fuel Tanks – Economic and Environmental Benefits for Arctic Operations

15:10 Hunter, R., Zaluski, G., and Willy, S. - Uranium in the Thelon Basin – A Future for Responsible Mineral Development in Canada’s North?

15:30 Rarog, M. and Bourke, R. - Evolving Standards for Northern Field Worker Safety

15:50 Campeau, C. - An Alternative for Lack of Marine Infrastructure: Ocean Group’s Floating Wharves

16:30-19:00 Reception (sponsored by Diavik Diamond Mine (a Rio Tinto/Harry Winston joint venture), First Air – The Airline of the North, Trinity Helicopters Ltd., and NWT & Nunavut Chamber of Mines) – Weledeh and St. Patrick’s School gymnasium – please don’t drink and drive. Complimentary rides home are provided by St. Patrick’s SADD. Pick-up is in the Weledeh parking lot.

19:00 Charles Camsell Talk: Dr. Jean-Bernard Caron (sponsored by NAPEG, and Yellowknife 2007) – Prince of Wales Heritage Centre

19:00 EBA Reception in support of NWT Mining Heritage Society – Top Knight (4910 49 St)



Tuesday, November 17 (afternoon)

Theatre 3 – Energy in Canada’s North Session

Chair: Adrienne Jones

12:30- 19:00 Trade Show – Weledeh and St. Patrick’s School gymnasium – Parking is available at 4503 52 Ave. (look for the Geoscience Forum signs)

14:50 MacNaughton, R.B., Fallas, K.M., Gal, L.P., Hadlari, T., and Sommers, M. - Geo-Mapping for Energy and Minerals (GEM): 2009 GSC-NTGO Field Studies in the Mackenzie Corridor

15:10 Price, P.R. and Enachescu, M.E. - The Maunoir Oil Discovery – A Cambrian Clastic Oil Discovery within the Sahtu Settlement Region of the Central Mackenzie Valley, NWT

15:30 Issler, D.R., Chen, Z., Hu, K., and Lane, L.S. - Geo-Mapping for Energy and Minerals (GEM): Studies of the Beaufort-Mackenzie Basin Thermal Regime

15:50 Drummond, K.J. - Tarsiut-Amauligak Fault Zone, Beaufort Sea, Ultimate Oil and Gas Resources

16:10 Blasco, S.M., Bennett, R., MacKillop, K., Youngblut, S.E., Brucker, S.T., and Blasco K.A. - Seabed Geohazard Constraints to Deep Water Exploration Drilling in the Canadian Beaufort Sea

16:30-19:00 Reception (sponsored by Diavik Diamond Mine (a Rio Tinto/Harry Winston joint venture), First Air – The Airline of the North, Trinity Helicopters Ltd., and NWT & Nunavut Chamber of Mines) – Weledeh and St. Patrick’s School gymnasium – please don’t drink and drive. Complimentary rides home are provided by St. Patrick’s SADD. Pick-up is in the Weledeh parking lot.

19:00 Charles Camsell Talk: Dr. Jean-Bernard Caron (sponsored by NAPEG, and Yellowknife 2007) – Prince of Wales Heritage Centre

19:00 EBA Reception in support of NWT Mining Heritage Society – Top Knight (4910 49 St)



Tuesday, November 17 (evening)

Charles Camsell Talk (sponsored by NAPEG, and Yellowknife 2007) – open to the public (free)
Prince of Wales Northern Heritage Centre (PWNHC)

19:00 Dr. Jean-Bernard Caron, Royal Ontario Museum - Treasures of the Burgess Shale; A paleontological windfall revisited

Biography

A profound curiosity about fossils during his childhood led Jean-Bernard Caron to collect and curate his own personal fossil collection in his native France. By the age of 10, he knew he wanted to become a professional palaeontologist. As a teenager, he often joined various professional field crews across Europe for summer field expeditions collecting fossils, and the experience gained as a volunteer field assistant led to an invitation from Desmond Collins, then Curator of Invertebrate Palaeontology at the Royal Ontario Museum (ROM), to join his field crew at the famous Burgess Shale fossil deposit in British Columbia. This was his first visit to Canada, and he returned to the Burgess Shale as a ROM volunteer for the following two summer field seasons.

His Master's thesis dealt with *Banffia constricta*, one of the most bizarre animals known from the Burgess Shale. By the end of his Ph.D. project, Jean-Bernard had examined about half the Burgess Shale specimens (more than 70,000 fossils) stored at the ROM, which houses what can now be considered the world's largest collection of its kind. He joined the ROM as Associate Curator of Invertebrate Paleontology in early 2006, thus finally fulfilling his long-standing childhood dream.

At present, his main responsibilities are to curate and interpret fossils from the very large ROM Burgess Shale collection. This represents a real Pandora's Box for science, with many new organisms still to be described. He also studies fossils from other deposits, particularly in China, where there are sites of similar age and quality of preservation. These Burgess Shale-type deposits yield spectacularly preserved soft-bodied organisms. Because of their great age (about half a billion years old), they are of crucial importance for the study of the origins of animal groups during the Cambrian evolutionary bloom.

Wednesday, November 18 (morning)

Theatre 1 – Exploration & Geoscience

Chairs: Don James, Edith Martel

09:00 Armstrong, J.P. – An update on the Hammer and Aviat Projects, Nunavut

09:20 Corrigan, D., Nadeau, L., Brouillette, P., Tremblay, T., Boutin, M., Wodicka, N., Houlé, M., Spratt, J., Erdmann, S., Clark, D., Partin, C., Day, S., and Kuiper, Y. - The GEM-Minerals Program on Melville Peninsula: Project Summary and Preliminary Report

09:40 Kienlen, B. - Unexplored Potential of the Amaruk Project

10:00 Coffee (sponsored by De Beers Canada Inc.)

10:20 Tremblay, T., Paulen, R., and Corrigan, D. - Quaternary Geology Studies in Northern Melville Peninsula, Nunavut

10:40 Duke, N., MacLeod, M., and Iannelli, T. - Bedrock Geology and Mineral Resources of IOL PI-17, North-Central Baffin Island

11:00 Young, M., Sanborn-Barrie, M., Dyke, A., James, D., Lynds, T., Craven, J., and Coyle, M. - The Cumberland Peninsula GEM Project: Overview of 2009 Field Results and Insights into Exploration Potential

11:20 Turner, E.C. and Long, D.G.F. - Rift-Related Shale Lithostratigraphy, Chemostratigraphy and Metal Prospectivity, Mesoproterozoic Borden Basin, Nu

11:40 Coffee (sponsored by NWT & Nunavut Chamber of Mines)

12:00 Long, D.G.F. and Turner, E.C. - Tectonic, Sedimentary and Metallogenic Re-Evaluation of Basal Strata in the Mesoproterozoic Bylot Basins (NU): Are Unconformity-Type Uranium Concentrations a Realistic Expectation?

12:20 Bédard J., Rainbird, R.H., Dewing, K., Hadlari, T., Harris, J., Ootes, L., and Sharpe, D. - Victoria Island GEM Project: Base and Precious Metal Potential of Minto Inlier and Surrounding Region, N.W.T. and Nunavut

12:40 Harris, J. - Nuclear North of 60° – Total Energy Supply for Remote Human Habitations

13:00 Lunch (sponsored by NWT & Nunavut Chamber of Mines) – Capitol Theatre

13:00 NWT & Nunavut Chamber of Mines AGM (ticket is required) – Yellowknife Inn, Copper Room



Wednesday, November 18 (morning)

Theatre 2 – Climate Change

Chairs: Steve Kokelj , Carl Ozyer

- 09:00 Kokelj, S.V., Thompson, M., Thienpont, J., Lantz, T.C., Pisaric, M., Smol, J., Blais, J., and Zajdlik, B.** - Climate Warming, Permafrost Degradation and Impacts to Aquatic Environments, Western Arctic, NWT, Canada.
- 09:20 Palmer, M.J., Kokelj, S.V., and Burn, C.R.** - Permafrost Conditions across the Treeline: A Case Study from the Mackenzie Delta Area
- 09:40 Nesbitt, L. and Ripley, S.** - The Impacts of Climate Change on Water and Wastewater Systems: Assessment and Monitoring in the NWT
- 10:00 Coffee** (sponsored by De Beers Canada Inc.)
- 10:20 Seto, J.T.C.** - Considering Climate Change in Northern Development
- 10:40 Cousineau, G.S.** - Climate Change Adaptation and Northern Transportation
- 11:00 Kokelj, S.V., Riseborough, D., Coutts, R., and Kanigan, J.C.N.*** - Permafrost and Terrain Conditions at Northern Drilling-Mud Sumps: Impacts of Vegetation and Climate Change and the Management Implications
- 11:20 Holubec, I., Auld, H., Fernandez, S. and Wang, B.** - Climate (Temperature) and Ground Temperature Dynamic Normals for Northern Canada
- 11:40 Coffee** (sponsored by NWT & Nunavut Chamber of Mines)
- 12:00 Kokelj, S.V., Lantz, T.C., Pisaric, M.F.J., Solomon, S., and Morse, P.** - Large Scale Impacts of a Storm Surge in the Outer Mackenzie Delta, N.W.T.
- 12:20 Whalen, D., Solomon, S., Forbes, D., Manson G., Plewes, M.** - The Changing River Morphology of the Mackenzie Delta
- 12:40 Simons, B., De La Mare, C., Stevens, C., Panayi, D.** - Climate Change and Wildlife in Canada's North
- 13:00 Lunch** (sponsored by NWT & Nunavut Chamber of Mines) – Capitol Theatre
- 13:00 NWT & Nunavut Chamber of Mines AGM** (ticket is required) – Yellowknife Inn, Copper Room

Wednesday, November 18 (morning)

Theatre 3 – Outreach

Chairs: Diane Baldwin, Fritz Griffith

10:00 Coffee (sponsored by De Beers Canada Inc.)

10:20 Enge, A. - Creating Partnerships through Training

10:40 Chouinard, R. - Investigating Community Mine Education Strategies: A Case Study with the Tlicho Community, NWT, Canada (*student presentation*)

11:00 Matthews, S. - Tundra Science Camp at the Tundra Ecosystem Research Station, NWT

11:20 Griffith, F. - Community Mapping Program: Geoscience Outreach with a Hands-on Approach

11:40 Coffee (sponsored by NWT & Nunavut Chamber of Mines)

12:00 Ham, L. - Geoscience Outreach: Rock and Mineral Kits across Nunavut

12:20 Daniel, S. - Experiential Science

13:00 Lunch (sponsored by NWT & Nunavut Chamber of Mines) – Capitol Theatre

13:00 NWT & Nunavut Chamber of Mines AGM (ticket is required) – Yellowknife Inn, Copper Room



Wednesday, November 18 (afternoon)

Theatre 1 – Keynote Address

14:00-14:50 Keynote Presentation (open to delegates)

Dr. Dan Marshall, Simon Fraser University - The Mountain River Emerald Occurrence, Northwest Territories: A New Environment for Emerald Formation in the Continuum of Gem-Beryl and Emerald Deposits Worldwide

Dr. Marshall is The Howard Street Robinson Lecturer chosen by the Mineral Deposits Division and the Precambrian Division of the GAC[®]. It is funded by the Robinson Fund of the GAC[®] that was established in 1977, following the bequest to GAC[®] from the estate of Howard Street Robinson, a founding member of GAC[®]. The bequest was "for furtherance of scientific study of Precambrian Geology and Metal Mining."

Dr. Marshall's lecture will cover the occurrences of emerald within the Canadian Cordillera. The talk includes information on the various types of emerald and gem beryl occurrences, exploration models and background information on the Canadian occurrences in a global framework.

Biography

Dr. Marshall was born and raised south of Ottawa. He attended Carleton University for his BSc and MSc studies finishing his MSc in 1990. He completed his DSc in Switzerland in 1995 studying the PTt path of the Mont Blanc massif using a variety of thermobarometric techniques, specifically fluid inclusions, on a variety of sub-economic ore occurrences. He did a one year NSERC post-doctoral fellowship on the Sudbury mineralization, followed by a sessional lectureship at Carleton University. In 1998 he moved to the nascent Geology program at Simon Fraser. Currently, his research remains focused on thermobarometry applied to a variety of mineralization types and PTt studies.

14:00-17:00 Sahtu Land Use Plan – Industry Workshop – Yellowknife Inn, Garnet Room

14:00-19:00 Trade Show – Weledeh and St. Patrick's School gymnasium – Parking is available at 4503 52 Ave. (look for the Geoscience Forum signs)

14:50-16:30 Poster Session (Sponsored by Yellowknife 2007) – Capitol Theatre Lobby

16:30- 19:00 Reception (sponsored by Nuna Group of Companies, and NWT & Nunavut Chamber of Mines) – Weledeh and St. Patrick's School gymnasium – please don't drink and drive. Complimentary rides home are provided by St. Patrick's SADD. Pick-up is in the Weledeh parking lot.

17:00 NAPEG Annual General Meeting

The Explorer Hotel, Katimavik Room C



Wednesday, November 18 (afternoon)

14:00-14:50 Keynote Address – Dr. Dan Marshall – Capitol Theatre 1

14:00-17:00 Sahtu Land Use Plan – Industry Workshop – Yellowknife Inn, Garnet Room

14:00-19:00 Trade Show – Weledeh and St. Patrick’s School gymnasium – Parking is available at 4503 52 Ave. (look for the Geoscience Forum signs)

14:50-16:30 Poster Session (Sponsored by Yellowknife 2007) – Capitol Theatre Lobby

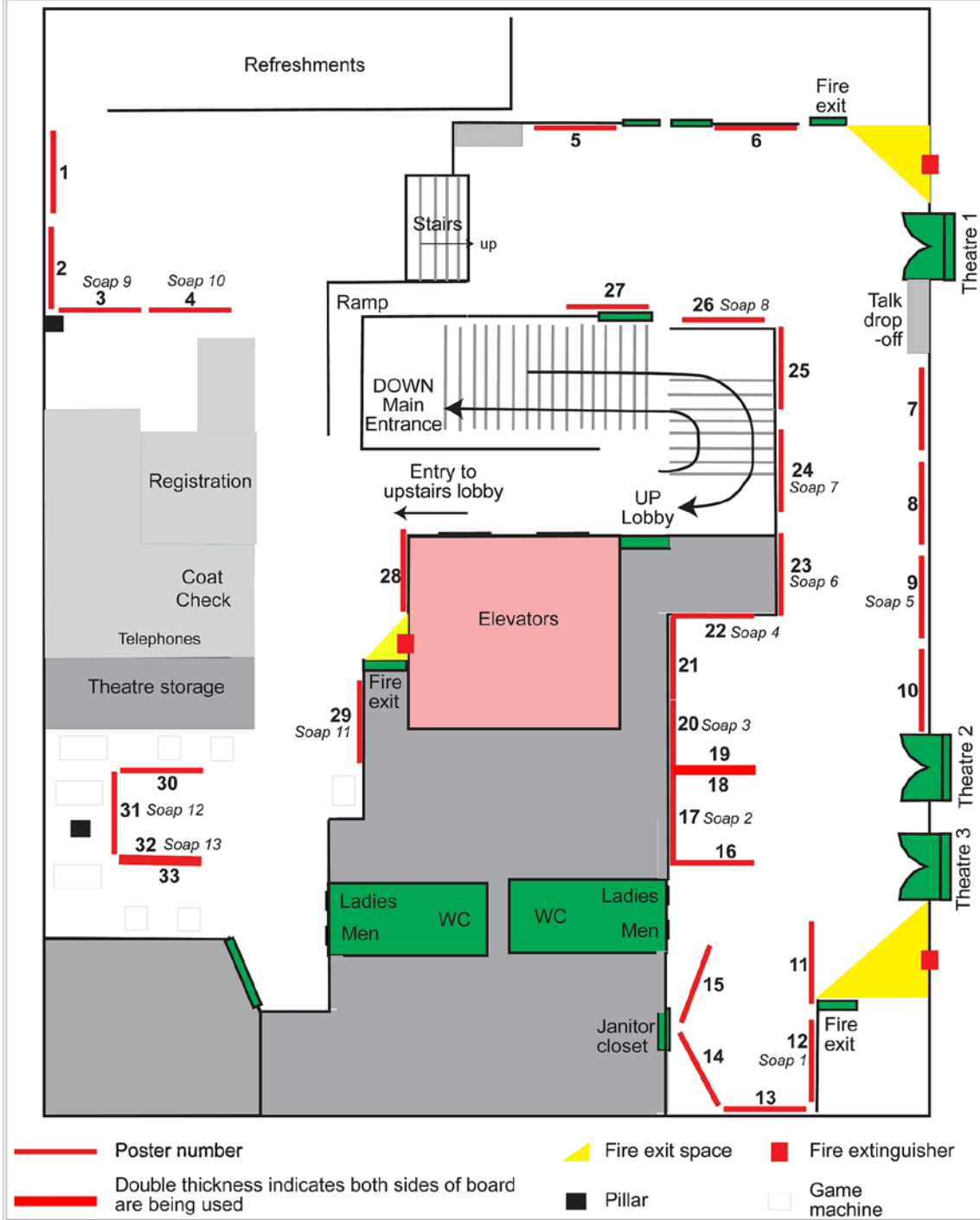
16:30- 19:00 Reception (sponsored by Nuna Group of Companies, and NWT & Nunavut Chamber of Mines) – Weledeh and St. Patrick’s School gymnasium – please don’t drink and drive. Complimentary rides home are provided by St. Patrick’s SADD. Pick-up is in the Weledeh parking lot.

Capitol Theatre Lobby - Poster Session (14:50 to 16:30) (sponsored by Yellowknife 2007)

Chairs: Beth Fischer, Val Jackson



Capitol Theatre Lobby Floorplan - Poster and Soapbox Talk Locations



Poster Locations (Alphabetically by First Author)

Location	First Author Surname	Title	Category
19	Acosta Gongora	Preliminary Observations of the IOCG Mineralization at the DAMP, FAB, and Nori Showings, Great Bear Magmatic Zone	Wopmay/IOCG
16	Baldwin	Community Mapping Program: Fort McPherson, NWT	Outreach
33	Beales	Got Kimberlite – NTGO is the Custodian of a Major Kimberlite Collection	Diamonds
26	Bédard*	Geochemical and Mineral-Chemical Systematics from a Picritic Franklin Sill on Victoria Island, N.W.T.: Insights on Internal Fractionation Processes	Geoscience - Islands
27	Bédard	The Booth River Intrusive Complex, Nunavut: Preliminary Results	Geoscience - Slave
11	Cheng	Chemicals Management from Cradle to Grave	Environmental Mgmt
32	Cross*	The Diamond Potential of the Tuwawi Kimberlite (Baffin Island, Nunavut)	Diamonds
24	Fernandes*	Searching for SEDEX-Style Mineralization in the Northwest Territories: Barite as a Possible Vector	Min Dep - Cordillera
29	Hamre*	NWT Protected Areas Strategy: Research Used for Protected Areas Decision Making	Land Withdrawals
25	Hicken	Indicator Mineral and Surficial Geochemical Study of the Izok Lake Zn-Cu-Pb-Ag Volcanogenic Massive Sulphide Deposit, Nunavut	Surficial / Min Dep - Slave
21	Jackson	South Wopmay Bedrock Mapping Project: Highlights from 2009	Wopmay/IOCG
31	Johnson*	The Micro-/ Macro-Diamond Relationship: A Preliminary Case Study on Diamonds from Artemisia Kimberlite (Northern Slave Craton, Canada)	Diamonds
14	Jones	Regional Geoscience Studies and Petroleum Potential, Peel Plateau and Plain, Northwest Territories and Yukon: Final Deliverables	Energy
15	Kerr	Tri-Territorial Surficial Geology Map Integration	Surficial
6	Kerswill	Activities under the Mineral Resource Assessment Component, GEM Minerals Program	Remote Mapping
20	Lee*	Geophysical Interpretation of the South Wopmay, Northwest Territories, Canada	Wopmay/IOCG
1	MacLeod	Manganese and Phosphorous Enrichment In Baffinland Iron Mines Corp. Deposit No. 1, Mary River Iron Formation, Northern Baffin Island, Nunavut	Min Dep - Baffin
12	Macumber*	High Resolution Paleoclimatic Study of Lacustrine Sediments along Tibbitt Contwoyto Ice Road, Yellowknife, NWT, Canada	Climate Change
30	Marcheggiani -Croden	Diavik Boart - Unrelated to Gem Diamond and Fibrous Coats?	Diamonds
23	Milton*	The Redstone Copperbelt, Northwest Territories, Canada	Min Dep - Cordillera

Posters by Author

Location	First Author Surname	Title	Category
18	Montreuil	IOCG Environments in the Great Bear Magmatic Zone	Wopmay/IOCG
8	Mumford	The Petrology of the Blachford Lake Intrusive Suite: Putting HFSE and Cu-PGE Mineralization into Context	Min Dep - Slave
5	Mvondo	Study of a Structural and Stratigraphic Link between Elu and Hope Bay Greenstone Belts, NE Slave Craton	Geoscience - Slave
7	Ootes	Is Our Bedrock 'Green'stone? Dimension and Building Stone Opportunities in the North Slave	Min Dep - Slave
4	Peter*	Hyperspectral Surveying in Support of Mineral Exploration in Canada's North; Rationale, Methodology, and an Example from the Hackett River Greenstone Belt, Nunavut	Rem Sens - Slave
10	Ripple	Fluid and Thermal History of a Breccia Zone of the West Bay Fault, Northwest Territories	Min Dep - Slave
2	Sanborn-Barrie	A New Bedrock Geology Map of the Cumberland Peninsula, Nunavut: An Initial Step in Evaluating the Mineral Potential of Eastern Baffin Island	Geoscience - Baffin
22	Smar*	Initial Investigations into the P-T-T-D History of Paleoproterozoic Supracrustal Rocks at Grant and Brownwater Lakes, Southern Wopmay Orogen	Wopmay/IOCG
9	Smith*	Characterization of Gold and Base-Metal Mineralization Styles in the North End of the Yellowknife Greenstone Belt	Min Dep - Slave
17	Tappert*	The Future of Core Logging: The Reflectance Spectroscopy of Hematite and Micas from the IOCG Deposit at Olympic Dam, South Australia	Wopmay/IOCG
3	Tschirhart*	Preliminary 3D geophysical modeling of the Aberdeen Sub-Basin, Thelon Province, Nunavut	Geophys - Thelon
13	Whalen	The Changing River Morphology of the Mackenzie Delta	Infrastructure / Geomorph
28	Wright	Mineral and Energy Resource Assessment (MERA) for the Area of Interest for the Proposed East Arm National Park – An Update	Resource Assessment

* soapbox talk will be given; see schedule below



Posters (by Location)

Location	First Author Surname	Title	Category
1	MacLeod[∞]	<i>Manganese and Phosphorous Enrichment In Baffinland Iron Mines Corp. Deposit No. 1, Mary River Iron Formation, Northern Baffin Island, Nunavut</i>	<i>Min Dep - Baffin</i>
2	Sanborn-Barrie	<i>A New Bedrock Geology Map of the Cumberland Peninsula, Nunavut: An Initial Step in Evaluating the Mineral Potential of Eastern Baffin Island</i>	<i>Geoscience - Baffin</i>
3	Tschirhart*[∞]	<i>Preliminary 3D geophysical modeling of the Aberdeen Sub-Basin, Thelon Province, Nunavut</i>	<i>Geophys - Thelon</i>
4	Peter*	<i>Hyperspectral Surveying in Support of Mineral Exploration in Canada's North; Rationale, Methodology, and an Example from the Hackett River Greenstone Belt, Nunavut</i>	<i>Rem Sens - Slave</i>
5	Mvondo	<i>Study of a Structural and Stratigraphic Link between Elu and Hope Bay Greenstone Belts, NE Slave Craton</i>	<i>Geoscience - Slave</i>
6	Kerswill	<i>Activities under the Mineral Resource Assessment Component, GEM Minerals Program</i>	<i>Remote Mapping</i>
7	Ootes	<i>Is Our Bedrock 'Green'stone? Dimension and Building Stone Opportunities in the North Slave</i>	<i>Min Dep - Slave</i>
8	Mumford[∞]	<i>The Petrology of the Blachford Lake Intrusive Suite: Putting HFSE and Cu-PGE Mineralization into Context</i>	<i>Min Dep - Slave</i>
9	Smith*[∞]	<i>Characterization of Gold and Base-Metal Mineralization Styles in the North End of the Yellowknife Greenstone Belt</i>	<i>Min Dep - Slave</i>
10	Ripple	<i>Fluid and Thermal History of a Breccia Zone of the West Bay Fault, Northwest Territories</i>	<i>Min Dep - Slave</i>
11	Cheng	<i>Chemicals Management from Cradle to Grave</i>	<i>Environmental Mgmt</i>
12	Macumber*[∞]	<i>High Resolution Paleoclimatic Study of Lacustrine Sediments along Tibbitt Contwoyto Ice Road, Yellowknife, NWT, Canada</i>	<i>Climate Change</i>
13	Whalen	<i>The Changing River Morphology of the Mackenzie Delta</i>	<i>Infrastructure / Geomorph</i>
14	Jones	<i>Regional Geoscience Studies and Petroleum Potential, Peel Plateau and Plain, Northwest Territories and Yukon: Final Deliverables</i>	<i>Energy</i>
15	Kerr	<i>Tri-Territorial Surficial Geology Map Integration</i>	<i>Surficial</i>
16	Baldwin	<i>Community Mapping Program: Fort McPherson, NWT</i>	<i>Outreach</i>
17	Tappert*	<i>The Future of Core Logging: The Reflectance Spectroscopy of Hematite and Micas from the IOCG Deposit at Olympic Dam, South Australia</i>	<i>Wopmay/IOCG</i>
18	Montreuil	<i>IOCG Environments in the Great Bear Magmatic Zone</i>	<i>Wopmay/IOCG</i>
19	Acosta Gongora[∞]	<i>Preliminary Observations of the IOCG Mineralization at the DAMP, FAB, and Nori Showings, Great Bear Magmatic Zone</i>	<i>Wopmay/IOCG</i>
20	Lee*[∞]	<i>Geophysical Interpretation of the South Wopmay, Northwest Territories, Canada</i>	<i>Wopmay/IOCG</i>
21	Jackson	<i>South Wopmay Bedrock Mapping Project: Highlights from 2009</i>	<i>Wopmay/IOCG</i>

Posters by Location

Location	First Author Surname	Title	Category
22	Smar* [∞]	<i>Initial Investigations into the P-T-T-D History of Paleoproterozoic Supracrustal Rocks at Grant and Brownwater Lakes, Southern Wopmay Orogen</i>	<i>Wopmay/IOCG</i>
23	Milton* [∞]	<i>The Redstone Copperbelt, Northwest Territories, Canada</i>	<i>Min Dep - Cordillera</i>
24	Fernandes* [∞]	<i>Searching for SEDEX-Style Mineralization in the Northwest Territories: Barite as a Possible Vector</i>	<i>Min Dep - Cordillera</i>
25	Hicken* [∞]	<i>Indicator Mineral and Surficial Geochemical Study of the Izok Lake Zn-Cu-Pb-Ag Volcanogenic Massive Sulphide Deposit, Nunavut</i>	<i>Min Dep / Surficial - Slave</i>
26	Bédard*	<i>Geochemical and Mineral-Chemical Systematics from a Picritic Franklin Sill on Victoria Island, N.W.T.: Insights on Internal Fractionation Processes</i>	<i>Geoscience - Islands</i>
27	Bédard	<i>The Booth River Intrusive Complex, Nunavut: Preliminary Results</i>	<i>Geoscience - Slave</i>
28	Wright	<i>Mineral and Energy Resource Assessment (MERA) for the Area of Interest for the Proposed East Arm National Park – An Update</i>	<i>Resource Assessment</i>
29	Hamre*	<i>NWT Protected Areas Strategy: Research Used for Protected Areas Decision Making</i>	<i>Land Withdrawals</i>
30	Marcheggiani-Croden	<i>Diavik Boart - Unrelated to Gem Diamond and Fibrous Coats?</i>	<i>Diamonds</i>
31	Johnson* [∞]	<i>The Micro-/ Macro-Diamond Relationship: A Preliminary Case Study on Diamonds from Artemisia Kimberlite (Northern Slave Craton, Canada)</i>	<i>Diamonds</i>
32	Cross*	<i>The Diamond Potential of the Tuwawi Kimberlite (Baffin Island, Nunavut)</i>	<i>Diamonds</i>
33	Beales	<i>Got Kimberlite – NTGO is the Custodian of a Major Kimberlite Collection</i>	<i>Diamonds</i>

*** soapbox talk will be given; see schedule below**
∞ student presentation



Soapbox Talks Schedule (14:58 to 16:30)

Chairpersons: Beth Fischer & Val Jackson

Location	First Author Surname	Soapbox Talk	Approx Time	Title	Category
12	Macumber*	1	14:58	High Resolution Paleoclimatic Study of Lacustrine Sediments along Tibbitt Contwoyto Ice Road, Yellowknife, NWT, Canada	Climate Change
17	Tappert	2	15:05	The Future of Core Logging: The Reflectance Spectroscopy of Hematite and Micas from the IOCG Deposit at Olympic Dam, South Australia	Wopmay/IOCG
20	Lee*	3	15:12	Geophysical Interpretation of the South Wopmay, Northwest Territories, Canada	Wopmay/IOCG
22	Smar*	4	15:19	Initial Investigations into the P-T-T-D History of Paleoproterozoic Supracrustal Rocks at Grant and Brownwater Lakes, Southern Wopmay Orogen	Wopmay/IOCG
9	Smith*	5	15:26	Characterization of Gold and Base-Metal Mineralization Styles in the North End of the Yellowknife Greenstone Belt	Min Dep - Slave
23	Milton*	6	15:33	The Redstone Copperbelt, Northwest Territories, Canada	Min Dep - Cordillera
24	Fernandes*	7	15:40	Searching for SEDEX-Style Mineralization in the Northwest Territories: Barite as a Possible Vector	Min Dep - Cordillera
26	Bédard	8	15:47	Geochemical and Mineral-Chemical Systematics from a Picritic Franklin Sill on Victoria Island, N.W.T.: Insights on Internal Fractionation Processes	Geoscience - Islands
3	Tschirhart*	9	15:54	Preliminary 3D geophysical modeling of the Aberdeen Sub-Basin, Thelon Province, Nunavut	Geophys - Thelon
4	Peter	10	16:01	Hyperspectral Surveying in Support of Mineral Exploration in Canada's North; Rationale, Methodology, and an Example from the Hackett River Greenstone Belt, Nunavut	Rem Sens - Slave
29	Hamre	11	16:08	NWT Protected Areas Strategy: Research Used for Protected Areas Decision Making	Land Withdrawals
31	Johnson*	12	16:15	The Micro-/ Macro-Diamond Relationship: A Preliminary Case Study on Diamonds from Artemisia Kimberlite (Northern Slave Craton, Canada)	Diamonds
32	Cross	13	16:22	The Diamond Potential of the Tuwawi Kimberlite (Baffin Island, Nunavut)	Diamonds

* student presenter



Thursday, November 19 (morning)

Theatre 1 – Exploration & Geoscience

Chairs: Pattie Beales, Aleksandar Miskovic

- 08:40 Kjarsgaard, B.A. and Snyder, D.B.** - The GEM Diamond Project: An Overview
- 09:00 Holmes, P., Pell, J., Clements, B., Grenon, H., and Sell, M.** - The Chidliak Diamond Project, Baffin Island, One Year after Initial Discovery
- 09:20 Mather, K. A., Pearson, D. G., Kjarsgaard, B. A., and Stachel, T.** - A New Look at Slave Lithosphere Palaeogeotherms and the “Diamond Window” (*student presentation*)
- 09:40 Kopylova, M. G., Navon, O., and Dubrovinsky, L.** - Carbonatitic Affinity of Natural Diamond-Forming Fluids
- 10:00 Coffee** (sponsored by Aurora Telenet (Canada) Inc.)
- 10:40 Bruce, L.F., Kopylova, M.G., Longo, M., Ryder, J., and Dobrzhinetskaya, L.F.** - Cathodoluminescence of Diamonds in Metamorphic Rocks
- 10:40 Hunt, L., Stachel, T., and Armstrong, J.** - Trace Element Systematics of Microxenoliths and Xenocrysts from the Renard Kimberlites, Quebec (*student presentation*)
- 11:00 Smart, K.A., Chacko, T., Heaman, L.M., Stachel, T., and Muehlenbachs, K.** - Multiple Origins of Eclogitic Diamonds from the Jericho Kimberlite, Nunavut (*student presentation*)
- 11:20 Mustafa, J.** - Snap Lake Diamond Mine – Update
- 11:40 Coffee** (sponsored by SRC Geoanalytical Laboratories)
- 12:00 Rainbird, R.H., Davis, W.J., Hahn, K., Furlanetto, F., and Thorkelson, D.** - Revised Correlation of Late Paleoproterozoic Sequences in Northwestern Canada and Linkage of the Forward and Racklan Orogenies
- 12:20 Hahn, K., Rainbird, R.H., Cousens, B., and Davis, W.** - Provenance and Depositional Setting of the Upper Hornby Bay Group, NWT and Nunavut (*student presentation*)
- 12:40 Harris, J.R.** - A Review of Remote Predictive Mapping (RPM) Activities in Canada’s North
- 13:00 Lunch** (sponsored by First Air – The Airline of the North, and NWT & Nunavut Chamber of Mines) – Weledeh and St. Patrick’s School gymnasium
- 10:00-15:00 Trade Show** – Weledeh and St. Patrick’s School gymnasium. Parking is available at 4503 52 Ave. (look for the Geoscience Forum signs).
- 14:00 Business Card Draws, and Passport to Diamond Draw** – Weledeh and St. Patrick’s School gymnasium



Thursday, November 19 (morning)

Theatre 2 – Mining & Environmental Management

Chairs: Kirsty Ketchum, Erika Nyysönen

08:40 Wollenberg, P. - Environmental Management Systems in Exploration at Areva Resources

09:00 Jamieson, H.E. and Wrye, L.A. - The Presence and Persistence of Arsenic Trioxide in Soils near Giant Mine and Giant Town Site

9:20 Momeyer, S.A., Smith, L., Gupton, M., Neuner, M., Blowes D., and Segó, D. - Hydrology of Unsaturated Waste Rock in Semi-Arid Permafrost Environment (*student presentation*)

9:40 Taylor, A. - Prairie Creek Mine: Update

10:00 Coffee (sponsored by Aurora Telenet (Canada) Inc.)

10:20 Ehrlich, A. - The Significance Spectrum

10:40 Munro, K., Sibbald, C., and Nicol, S. - Finding Efficiencies in Environmental Monitoring Programs: Baseline Aquatic Studies for Environmental Assessments and Future Environmental Effects Monitoring Programs, Nechalacho Deposit as a Case History (*student presentation*)

11:00 Cliffe-Phillips, M.A., Clark, K.M., and Erasmus, E. - Marion Lake Watershed Monitoring and Management Program

11:20 Macneill, S.C., Schmidt, N.P., and Purcka, L.G. - Monitoring and Remediation of Fish Passage at an Undersized Road Culvert at Hill Creek, NWT

11:40 Coffee (sponsored by SRC Geoanalytical Laboratories)

12:00 Cheng, W.W. and Blenkinsopp, S. - Chemicals Management from Cradle to Grave

12:20 Paget, T.M. - Waste Management in Remote Camps in the Northwest Territories

12:40 Fox, D., Chandler, A. J., David, A., Lewis, M., and Hamilton, M. - An Overview of the Technical Document for Batch Waste Incineration

13:00 Lunch (sponsored by First Air – The Airline of the North, and NWT & Nunavut Chamber of Mines) – Weledeh and St. Patrick's School gymnasium

10:00-15:00 Trade Show – Weledeh and St. Patrick's School gymnasium. Parking is available at 4503 52 Ave. (look for the Geoscience Forum signs).

14:00 Business Card Draws, and Passport to Diamond Draw – Weledeh and St. Patrick's School gymnasium



Thursday, November 19 (afternoon)

Theatre 1 – Exploration & Geoscience

Chairs: John Ketchum, Edith Martel

15:10 Corriveau, L., McMartin, I., Brouillette, P., Bleeker, W., Jackson, V.A., Montreuil, J.-F., Mumin, H., Harvey, B., Kiss, F., and Carson, J. - The IOCG/Multiple Metals - Great Bear Region (NWT) Project, Geomapping for Energy and Minerals Program: Field Results, Status and Progress

15:30 Ootes, L., Davis, W.J., Bleeker, W., and Jackson, V.A. - Exposing the Hottah Terrane and Its Volcano-Sedimentary Cover

15:50 Goad, R., Rinaldi, T., Schryer, R., Samuels, M., and Mucklow, J. - Development Update for the NICO Gold-Cobalt-Bismuth-Copper Deposit, Northwest Territories

16:10 Mumin, A.H., Phillips, A., Katsuragi, C.J., and Mumin, A. - Oblique Extension, Tectonics and Mineral Deposition, Great Bear Magmatic Zone, NWT, Canada

16:30 Student Presentation Awards – Theatre 1

10:00-15:00 Trade Show – Weledeh and St. Patrick's School gymnasium. Parking is available at 4503 52 Ave. (look for the Geoscience Forum signs)



Thursday, November 19 (afternoon)

Theatre 2 – Mining & Environmental Management

Chairs: Kirsty Ketchum, Erika Nyysönen

15:10 Murray, D.J. - The Establishment of National Parks in the NWT, an Update

15:30 Panayi, D. - Caribou Monitoring at the Diamond Mines and Implications for Effects Mitigation

15:50 Panayi, D. and Carter, L. - A Tool for Cumulative Effects Assessment

16:30 Student Presentation Awards (Theatre 1)

10:00-15:00 Trade Show – Weledeh and St. Patrick's School gymnasium. Parking is available at 4503 52 Ave. (look for the Geoscience Forum signs)

