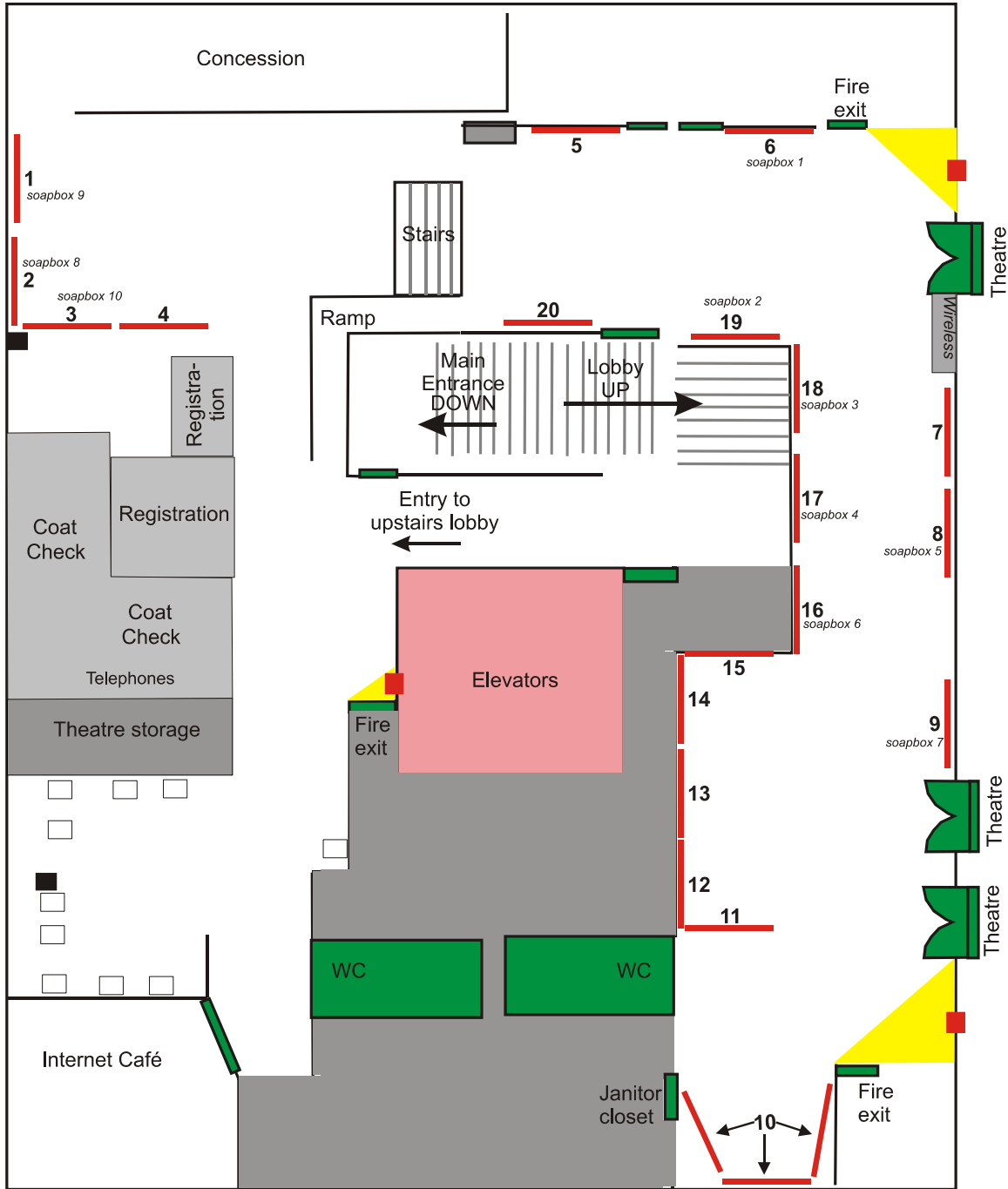


Capitol Theatre Lobby - Poster Session (14:50 to 16:30)
 Chairpersons: Beth Fischer, Hendrik Falck

Posters Floor Plan



- Poster board location
- Pillar
- Fire exit
- Fire extinguisher
- Game machine

Poster Locations (Alphabetically by First Author)

Location	Author(s)	Title	Category
20	Allen and Fraser	Upper Devonian to Lower Carboniferous Tuttle Formation, Northeastern Yukon: Potential Source, Reservoir and Trap	Energy
4	Baldwin	Community Mapping Program: Deline, NWT	Outreach
7	Bédard <i>et al.</i>	The Plumbing System of the Franklin Magmatic Event on Victoria Island, NWT, Preliminary Results	Expl & Geosc
8	* Bleeker and LeCheminant	The Proterozoic Dessert Lake Red-Bed Basin, a Target for Uranium Exploration — An Update	Expl & Geosc
12	Chakungal <i>et al.</i>	Natural Resource Potential – Yes or No? The Southampton Island Integrated Project: A Summary of 2007 & 2008 Results and Investigations	Expl & Geosc
19	* Dickson <i>et al.</i>	A New Geological Model for Oil Prospectivity in the Great Bear Plains, NWT	Energy
14	Gordey <i>et al.</i>	Sekwi Project: Revision Maps for the Central Mackenzie Mountains, NWT	Expl & Geosc
15	Harris <i>et al.</i>	Remote Predictive Mapping: Phase II with Emphasis on Recent Activities in the Wopmay Orogen	Expl & Geosc
6	* Heppelle	Professional Geoscience: New Legislation in the Northwest Territories and Nunavut	Regulatory
11	Kerr <i>et al.</i>	Tri-Territorial Surficial Geoscience Compilation	Expl & Geosc
5	McKnight and Wiebe	Draft Sahtu Land Use Plan: Ongoing Progress	Regulatory
1	* Mercer <i>et al.</i>	Effective Groundwater Monitoring for Mining Projects in Permafrost Environments	Enviro Mgmt
13	Okulich <i>et al.</i>	An Update: Geological Compilation Of The Mackenzie Mountains, NWT	Expl & Geosc
16	* Ootes <i>et al.</i>	A Conceptual Ni (Cu-Co-PGE) Play in the Archean Central Slave Cover Group	Expl & Geosc
18	* Podolsky <i>et al.</i>	Whole Rock Chemistry Investigations of the 5034 and Tuzo Kimberlites and Potential Applications to Improving Geology and Resource Models, Gahcho Kué Project, Northwest Territories	Expl & Geosc
9	* Rasmussen and Mortensen	Using Fluorine and Chlorine Contents of Magmatic Fluids to Target Undiscovered Tungsten Mineralization in the Selwyn-Mackenzie Mountains, NWT	Expl & Geosc
2	* Snidjers and Cameron	Advanced Research Initiatives Using the Mackenzie Delta Air Photo Project Spatial Data	Enviro Mgmt

Location	Author(s)	Title	Category
10	St-Onge <i>et al.</i>	A New Geological Map of the Arctic: Prelude to a GEM Tri-Territorial Compilation Project	Expl & Geosc
17	* Webb <i>et al.</i>	Coherent Kimberlite at Ekati, Northwest Territories, Canada: Textural and Geochemical Variations and Implications for Emplacement	Expl & Geosc
3	* Wilson	Important Wildlife Areas in the Western Northwest Territories	Enviro Mgmt

* soapbox talk will be given; see schedule below

Soapbox Talks Schedule (15:15 to 16:30)

Chairperson: Beth Fischer

(s) = student

Location	Author(s)	Approx Time (PM)	Title	
6	Heppelle	3:15	Professional Geoscience: New Legislation in the Northwest Territories and Nunavut	Regulatory
19	Dickson <i>et al.</i>	3:23	A New Geological Model for Oil Prospectivity in the Great Bear Plains, NWT	Energy
18	Podolsky <i>et al.</i>	3:31	Whole Rock Chemistry Investigations of the 5034 and Tuzo Kimberlites and Potential Applications to Improving Geology and Resource Models, Gahcho Kué Project, Northwest Territories	Expl & Geosc
17	Webb <i>et al.</i>	3:39	Coherent Kimberlite at Ekati, Northwest Territories, Canada: Textural and Geochemical Variations and Implications for Emplacement	Expl & Geosc
8	Bleeker and LeCheminant	3:47	The Proterozoic Dessert Lake Red-Bed Basin, a Target for Uranium Exploration — An Update	Expl & Geosc
16	Ootes <i>et al.</i>	3:55	A Conceptual Ni (Cu-Co-PGE) Play in the Archean Central Slave Cover Group	Expl & Geosc
9	Rasmussen and Mortensen	4:03	Using Fluorine and Chlorine Contents of Magmatic Fluids to Target Undiscovered Tungsten Mineralization in the Selwyn-Mackenzie Mountains, NWT	Expl & Geosc
2	Snidjers and Cameron	4:11	Advanced Research Initiatives Using the Mackenzie Delta Air Photo Project Spatial Data	Enviro Mgmt
1	Mercer <i>et al.</i>	4:19	Effective Groundwater Monitoring for Mining Projects in Permafrost Environments	Enviro Mgmt
3	Wilson	4:27	Important Wildlife Areas in the Western Northwest Territories	Enviro Mgmt